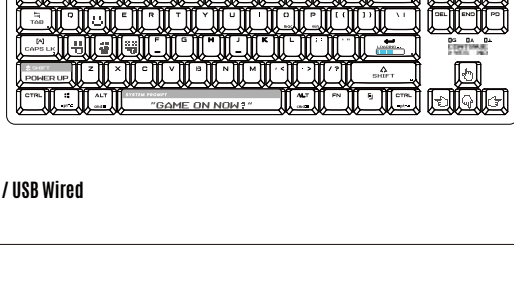


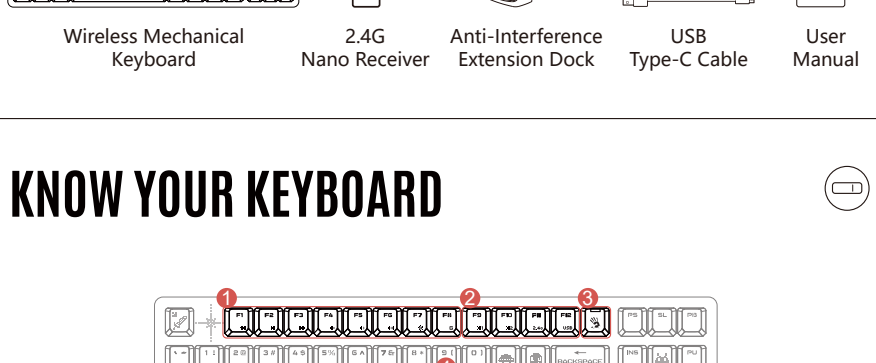
QUICK START GUIDE



Bluetooth® 2.4G / USB Wired



WHAT'S IN THE BOX

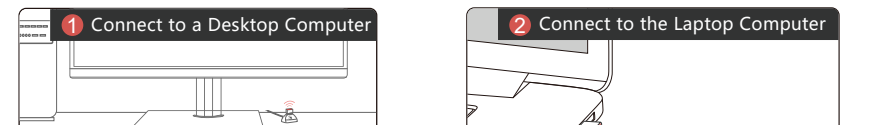


KNOW YOUR KEYBOARD



- 1 FN Multimedia Hotkeys
- 2 Multi-Device Switch
- 3 Lighting Effects Switching
- 4 Operating System Swap
- 5 PC/MAC Dual-Function Keys

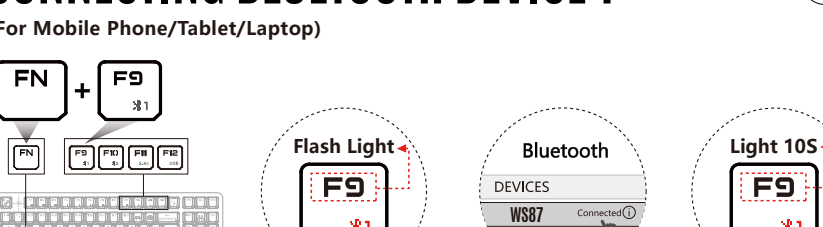
THE BOTTOM



INSTALLATION



The optimal operating range between the receiver and the keyboard is 30 to 100 cm, ensuring there are no obstructions between them.

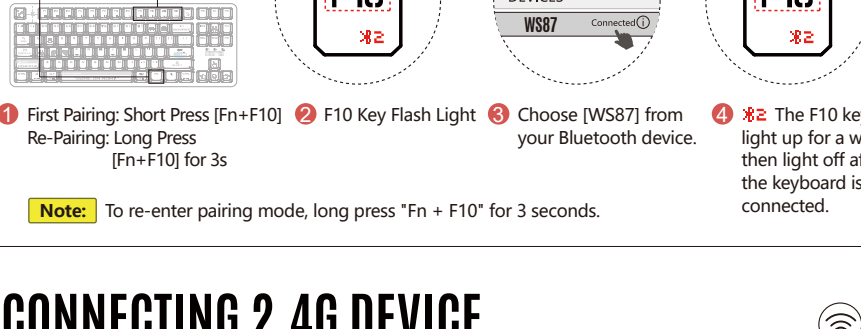


- 1 Connect the extension dock to the host computer, and plug the nano receiver into the extension dock.
- 2 Plug the nano receiver directly into the laptop.

CONNECTING BLUETOOTH DEVICE 1



(For Mobile Phone/Tablet/Laptop)



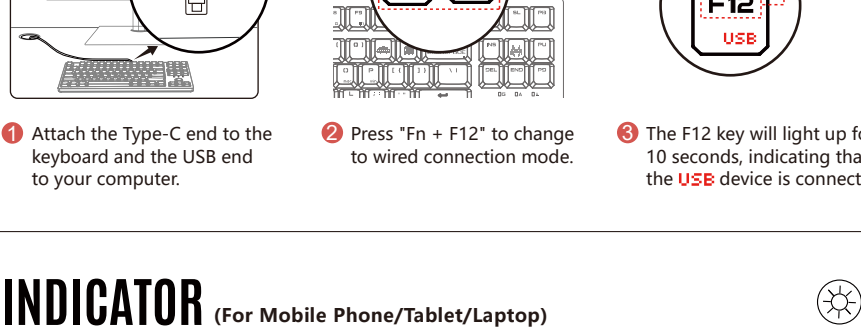
- 1 First Pairing: Short Press [Fn+F9] Re-Pairing: Long Press [Fn+F9] for 3s
- 2 F9 Key Flash Light
- 3 Choose [WS87] from your Bluetooth device.
- 4 Light 10S

Note: To re-enter pairing mode, long press "Fn + F9" for 3 seconds.

CONNECTING BLUETOOTH DEVICE 2



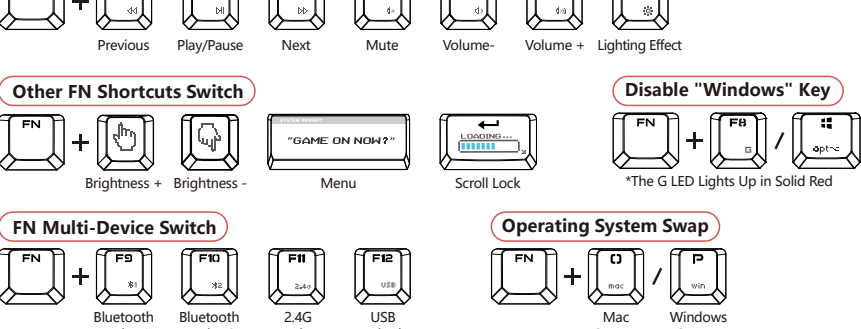
(For Mobile Phone/Tablet/Laptop)



- 1 First Pairing: Short Press [Fn+F10] Re-Pairing: Long Press [Fn+F10] for 3s
- 2 F10 Key Flash Light
- 3 Choose [WS87] from your Bluetooth device.
- 4 Solid Light

Note: To re-enter pairing mode, long press "Fn + F10" for 3 seconds.

CONNECTING 2.4G DEVICE



Note: The factory default mode is 2.4G. If the keyboard does not function, press "Fn + F11" to activate the 2.4G mode.

CONNECTING USB DEVICE



Note: While in wired mode, the keyboard charges simultaneously.



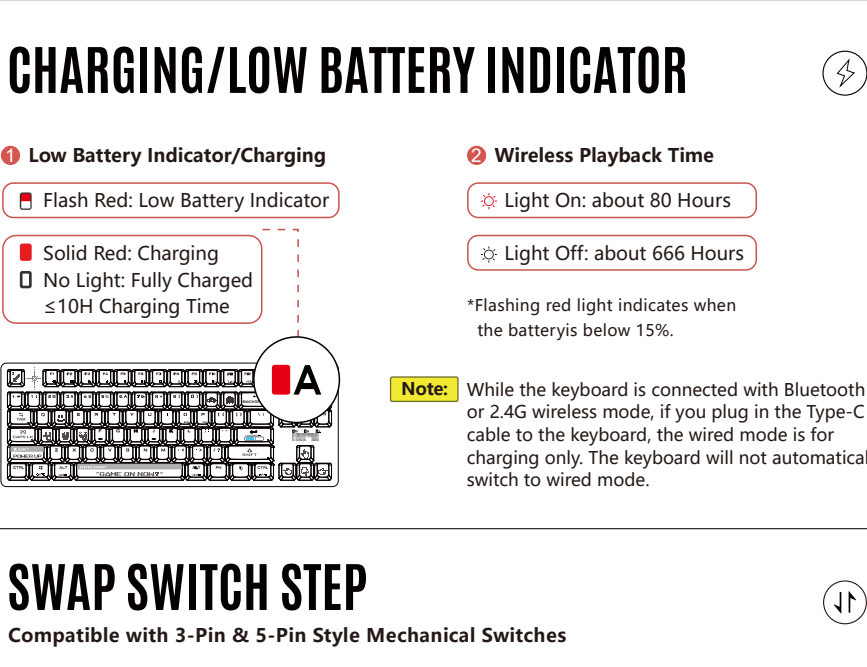
INDICATOR

(For Mobile Phone/Tablet/Laptop)



Device Indicator	F9 Key Flash Light	F10 Key Flash Light	F11 Key Flash Light	F12 Key Flash Light
Multi-Device Switch	FN + F9	FN + F10	FN + F11	FN + F12
Device Switch: Short-Press for 1S	F9 Solid Light 10S	F10 Solid Light 10S	F11 Solid Light 10S	F12 Solid Light 10S
First Pair: Automatic Pairing Re-Pair: Short-Press for 3S	Pairing: Flashes Slowly Connected: Solid Light 10S			No Need to Pair

COMBINATION FN KEYS



DUAL-FUNCTION KEY Win / Mac Layout



Keyboard Layout	Windows	Mac
FN + O/P	Switching Steps: ① Choose Mac layout by pressing "Fn + O". ② Choose PC layout by pressing "Fn + P".	
CTRL	Ctrl	Control ^
ALT	Start	Option
ALT	Alt	Command
ALT	Alt-Right	Command
CTRL	Ctrl-Right	Option

HOW TO CONFIRM CURRENT DEVICE



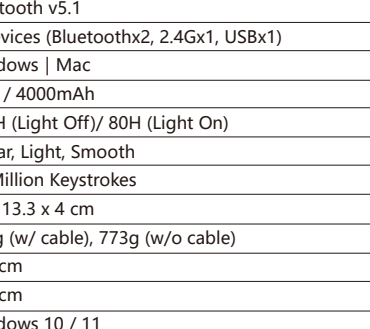
After turning on the computer or restarting the keyboard, the F9~F12 keys will light up to show the currently connected devices.

Keycaps	F9	F10	F11	F12
Status	Flash	Flash	Flash	Flash
Connection Mode	Bluetooth Device 1	Bluetooth Device 2	2.4G Device	USB Wired
Connecting	F9~F12 Key Solid Light 10S			
Connected	F9~F12 Key Restore RGB Lighting Effect			

WIRELESS K-ESPORT EDITOR



Provide the keyboard with simple combination settings and programming functions. Players can optimize the most suitable game configuration by key lighting and combination macros, then save it to the keyboard on-board memory.



Download Link: <https://www.bloody.com/en/download.php>

CHARGING/LOW BATTERY INDICATOR



- 1 Low Battery Indicator/Charging**
 - Flash Red: Low Battery Indicator
 - Solid Red: Charging
 - No Light: Fully Charged ≤10H Charging Time
- 2 Wireless Playback Time**
 - Light On: about 80 Hours
 - Light Off: about 666 Hours

*Flashing red light indicates when the battery is below 15%.

Note: While the keyboard is connected with Bluetooth or 2.4G wireless mode, if you plug in the Type-C cable to the keyboard, the wired mode is for charging only. The keyboard will not automatically switch to wired mode.

SWAP SWITCH STEP



Compatible with 3-Pin & 5-Pin Style Mechanical Switches

Q & A

- Question** When connected in 2.4G wireless mode, the keyboard sometimes lags. How can I fix this?
Answer Follow these steps to troubleshoot:
 1. Ensure the receiver is inserted in the USB anti-interference extension cable seat.
 2. Ensure the wireless environment is within 30~100 cm, with no obstacles or metal objects.
 3. Check for strong wireless routers or other wireless transmitter interference sources within 1 meter.
- Question** Is there a maximum number of wireless products that can be used in the same environment?
Answer We recommend 10 units or less. (For more than 10 units, it is recommended to be 1.5m~3m apart)
- Question** Does the keyboard support Win/Mac platforms and also Android and iOS keyboards?
Answer Yes, the layout of the Android platform is the same as the Win platform, and the layout of the iOS platform is the same as the Mac platform.
- Question** Can the keyboard layout be remembered?
Answer Yes, the layout you used last time will be remembered.
- Question** Does the keyboard remember the connected device?
Answer Yes, the device you connected last time will be remembered.
- Question** Will my Bluetooth device be disconnected if I plug in USB wired cable when using Bluetooth mode?
Answer No, multi-mode devices need to be switched manually.

TECH SPEC

Connection:	Bluetooth / 2.4G / Wired
Operating Range:	5-10 M
Bluetooth Version:	Bluetooth v5.1
Multi-Device:	4 Devices (Bluetoothx2, 2.4Gx1, USBx1)
Layout:	Windows Mac
Battery:	3.7V / 4000mAh
Battery Life:	666H (Light Off) / 80H (Light On)
BLMS Red Plus Switch:	Linear, Light, Smooth
Switch Lifetime:	50 Million Keystrokes
Size:	36 x 13.3 x 4 cm
Weight:	843g (w/ cable), 773g (w/o cable)
Type-C Cable Length:	180 cm
Anti-Interference Extension Dock:	120 cm
System Requirements:	Windows 10 / 11

WARNING STATEMENT

- The following actions may cause damage to the product:
- Disassembling, bumping, crushing, or throwing into the fire can cause irreparable damage due to lithium battery leakage.
 - Avoid exposing to strong sunlight.
 - Follow local laws for battery disposal; recycle if possible.
Improper disposal may cause fire or explosion.
 - Avoid charging in environments below 0°C.
 - Do not remove or replace the battery.
 - Do not use chargers with outputs from 6V to 24V. Use a 5V charger to avoid damage.

